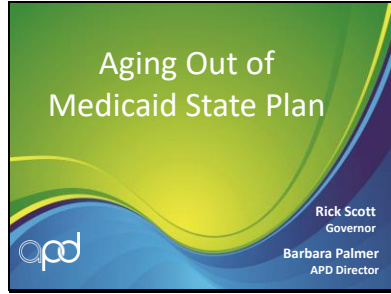
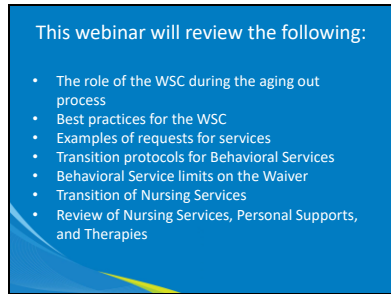


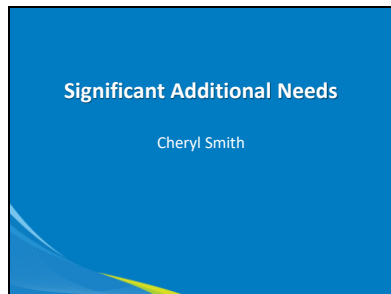
Slide 1



Slide 2



Slide 3



Slide 4

65G-4.0218
Significant Additional Need Funding

(1) Supplemental funding for Significant Additional Needs (SANs) may be one-time, temporary, or long-term in nature including the loss of Medicaid State Plan or school system services due to a change in age.

- Would place the health and safety of the client, the client's caregiver, or the public in serious jeopardy because of substantial changes in the client's circumstances
- Cannot be accommodated within the client's current iBudget amount

Slide 5

Best Practices

- Begin the aging out process 6 months prior to the consumer's graduation date or 21st birthday
- Develop a "tickler" system
- Gather documentation
- Submit a completed SAN 3 months prior to the consumer's graduation date or 21st birthday

Slide 6

Services and Service Units

- Medicaid State Plan vs. APD approvals
- Medical Necessity must still be demonstrated

Slide 7

Therapies

Physical/Occupational/Speech

- Prescription
- Current Plan of Care or Assessment
- Documentation that service meets Handbook criteria

Slide 8

Personal Supports

The diagram consists of three green circles arranged horizontally. The first circle on the left contains the text 'Personal Care Assistance'. To its right is a blue plus sign '+'. The second circle in the middle contains the text 'Respite Care'. To its right is a blue not-equal sign '≠'. The third circle on the right contains the text 'Personal Supports'.

Slide 9

Transition Steps for Behavioral Services

Dr. Steve Coleman

Slide 10

Transition Steps for Behavioral Services

Prior to a recipient aging out:

- Identify consumer's current needs
 - Behavior Analysis Services?
 - Behavior Assistant Services?
- What does the QSI Behavioral section say?
- Ask the current BA provider if they will continue

Slide 11

Transition Steps for Behavioral Services

Prior to a recipient aging out:

- Ask the current BA provider or eQHealth for the:
 - Behavioral Assessment/Behavior Plan
 - # of units for BA services
 - BA's recommendation if Behavior Assistant Services (BAS) are needed
 - # of units for BA services
 - Current Data for Target Behaviors

Slide 12

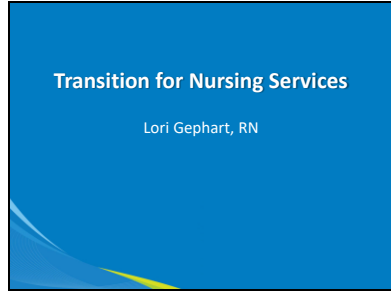
Transition Steps for Behavioral Services

Can current services be implemented as-is?

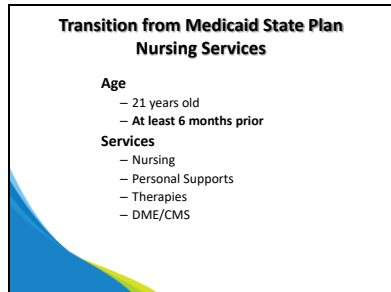
- If the current BA Provider will not continue
- If the Functional Behavior Assessment (FBA) or a Behavior Analysis Services Plan cannot be obtained

The WSC will need to request an FBA and 100 QHs with a new BA Provider.

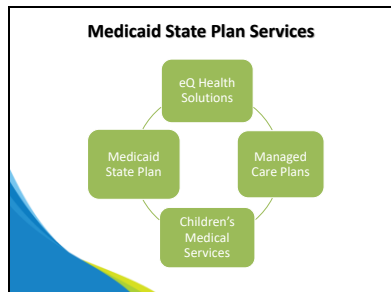
Slide 16



Slide 17



Slide 18



Slide 22

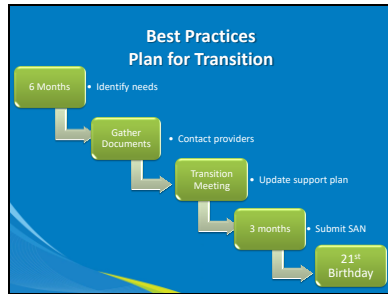
**Durable Medical Equipment
& Consumable Medical Supplies**

Who Pays For...

g-tubes, pumps, gauze, tape, suction catheters,
ventilators, tracheostomy tubes, formula, wheelchairs,
ramps, Q-tips, diapers, wipes

Required Documentation
What is needed? Where to look?

Slide 23



Slide 24

Still Need Help?

Local staff assistance can be found through the
APD Regional Staff Lists: <http://apdcares.org/region/>

- Medicaid Waiver Stream Lead
- Sr. Psychologist, Sr. Behavior Analyst, or Behavior Specialist
- Medical Case Manager

Questions?

For more information, contact:

Cheryl Smith, cheryl.smith@apdcares.org
Steve Coleman, Ph.D., Agency Sr. Behavior Analyst,
steve.coleman@apdcares.org
Lori Gephart, RN, lori.gephart@apdcares.org
Elizabeth Keating, elizabeth.keating@apdcares.org
